



FY 2021/2022 Water, Wastewater, and Stormwater Budget

What is the approved rate increase?



Water and Wastewater - \$1.11
Stormwater - \$0.26



\$1.37

Average Residential Bill Impact

What is the approved FY 21-22 budget? \$508M Investment in our future

Key Funding Priorities for Long-Term Sustainability



Securing our Future Water Supply:

Diversifying water resources is crucial to meet demands when river water is in low supply.

- Enhanced Arroyo Project - excavation and infiltration basins will be constructed as part of the first phase of EPWater's aquifer storage and recovery project
- Additional wells for drought resilience
- Continue desalination expansion



System Reliability:

To improve reliability of our systems, we must continue to replace old pipelines and modernize facilities.

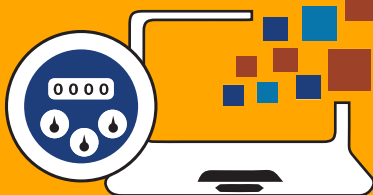
- Rehabilitation of water tanks
- Upgrades to 3 wastewater and 2 water treatment plants
- Water/wastewater pipeline replacements
- Continue with leak detection system program



Growth Requirements:

El Paso is growing and water/wastewater infrastructure is essential for new homes and businesses.

- Water and wastewater pipeline extensions in far east, west and northeast El Paso
- New tanks/reservoirs and pumping systems in far west and northeast El Paso

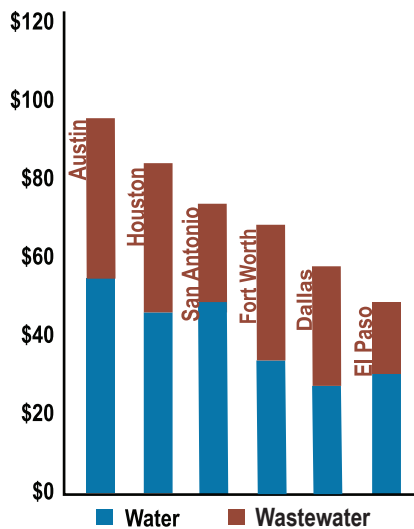


Technology, automation and meter upgrades to increase operational efficiency

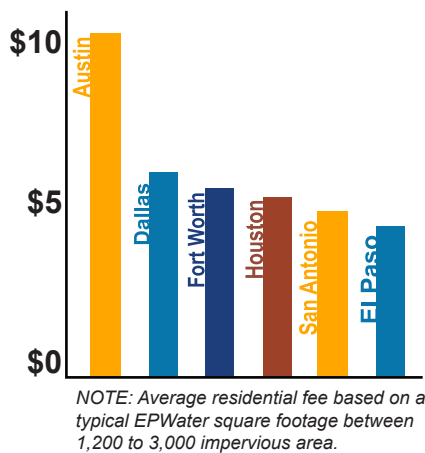


epwater.org

Water & Wastewater Rate Comparison



Residential Stormwater Fee Comparison



Stormwater

\$0.26 increase for typical residential customer
\$1.45 increase for small commercial customer

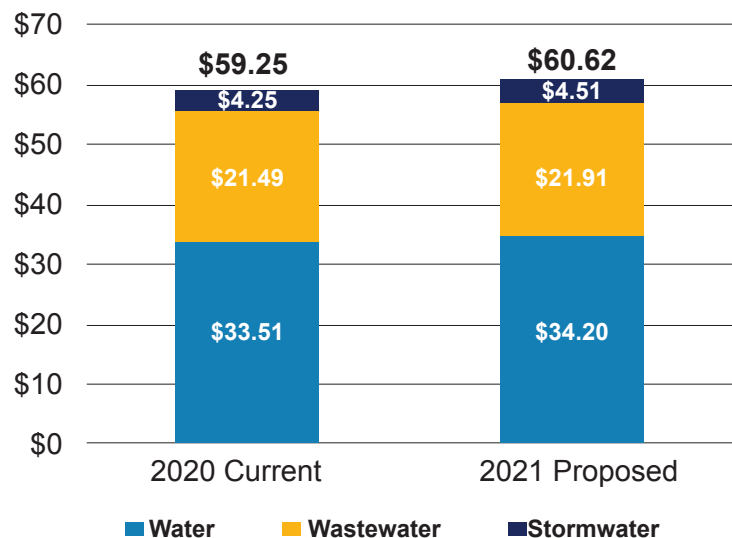
Slight increase will allow for the completion of additional flood control projects, as well as setting aside funding for open space projects.



Projects

- Bywood Drainage Improvements
- Sam Snead Improvement Project
- Arroyo 1A Dam
- Corrugated Metal Pipe Replacement Program

Total Proposed Residential Bill



Based on a typical sized home with average meter size and water use.

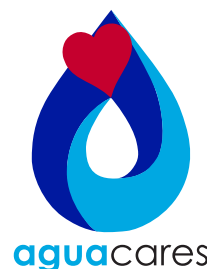
Programs to help reduce bills

Water Supply Replacement Charge

Since rates are based on consumption, customers can keep their water bill flat or reduce it through conservation.

Use **↓ 4ccf** (2990 gallons of water per month) = Average of **\$12** saved per month

Assistance services for low-income seniors:



- Money management
- Payment arrangements
- Conservation support
- Emergency payment assistance
- Agency referrals